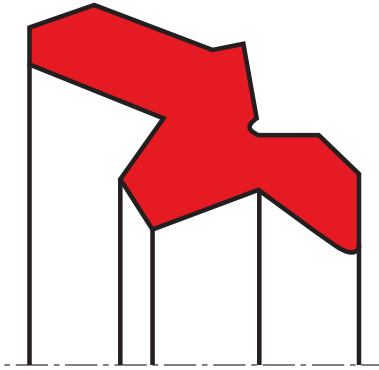


wiper A11-SL

seal spec



description

the scraper A11-SL is a double-acting scraper of polyurethane for severe operating conditions and heavy attack of dirt. the special design of the inward-facing sealing lip contributes to an optimum contact pressure resulting in a very high scraper effect of the residual oil film.

the outward-facing scraper lip leans against the housing. this ensures an optimum sealing force and further it prevents the penetration of dirt and water across the groove bottom. also at heavy attacks of dirt and side steering of the piston rod the scraper effect remains stable. the material polyurethane ensures a high service life, also at heavy requirements, and it is proof against installation damage.

application



not bolded symbols; please consult our technical for application limitations

category of profile

machined or molded/standard/trade product.

double acting

area of application: hydraulics

the A11-SL is especially suitable for application in:

- construction machinery.
- agriculture-and forestry machinery.
- mobile hydraulic.
- high attack of dirt.
- side steering of piston rod.

the A11-SL is especially used in connection with our Rod Seals S09-E, S09-SF.

advantages

- very good scraper effect of the outward lip.
- very good sealing effect of the inward lip.
- reliable at side steering of the piston rod.
- sturdy and wear-resistant.
- simple installation.

operating parameters & material

material	temperature	max. surface speed	max. pressure ¹
s-mart PU (92 Shore A)	-35°C ... + 100°C	≤ 0.5 m/s	50 bar (5 MPa)

the stated operation conditions represent general indications. it is recommended not to use all maximum values simultaneously. surface speed limits apply only to the presence of adequate lubrication film.

¹ pressure ratings are dependent on the size of the extrusion gap.

surface quality

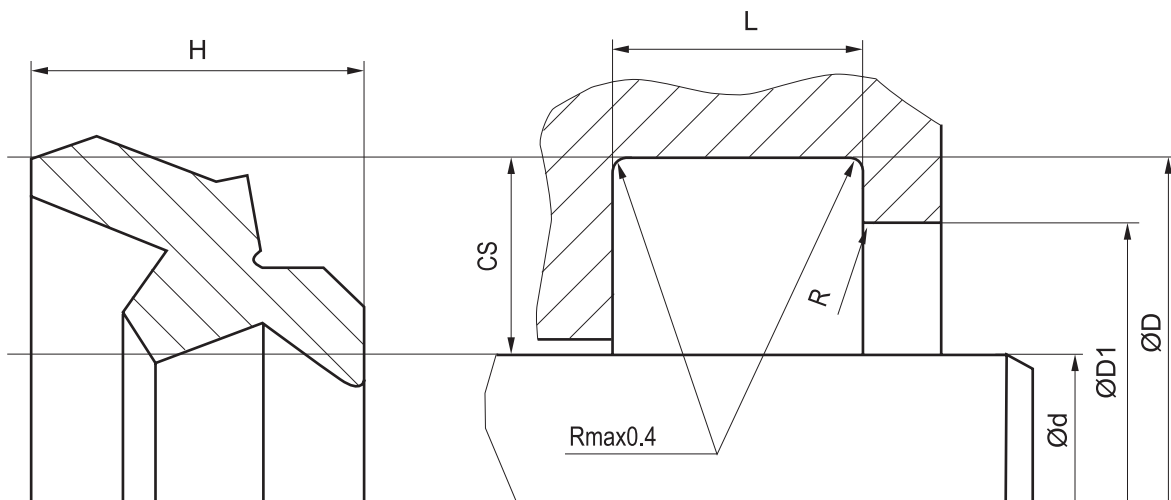
surface roughness	Rtmax (µm)	Ra (µm)
sliding surface	according to seal data	
bottom of groove	≤6,3	≤1,6
groove face	≤15	≤3

**tolerance recommendation**

seal housing tolerances		cs	R [mm]
d	f8/h9	≤ 5	max. 0,3
D	H9	$>5 \dots \leq 7,5$	max. 0,4
		$>7,5 \dots \leq 10$	max. 0,6
		> 10	max. 0,8

seal & housing recommendations

please note that we are able to produce those profiles to your specific need or any non standard housing. for detail measurements, please see seal-mart catalog...



don't hesitate to contact our technical department for further information or for special requirements (temperature, speed etc.), so that suitable materials and/or designs can be recommended.